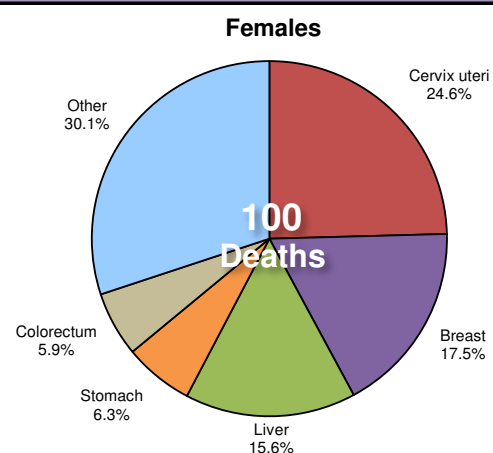
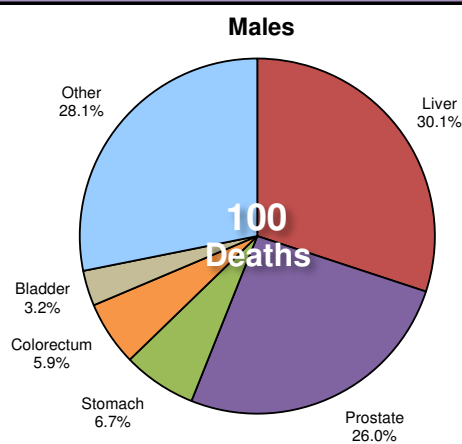


Cabo Verde

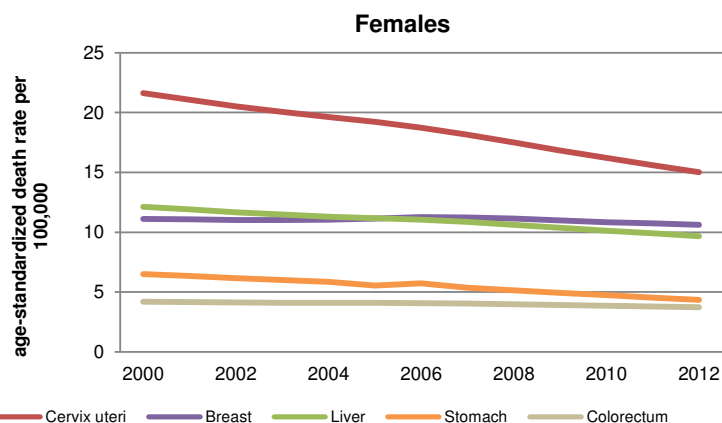
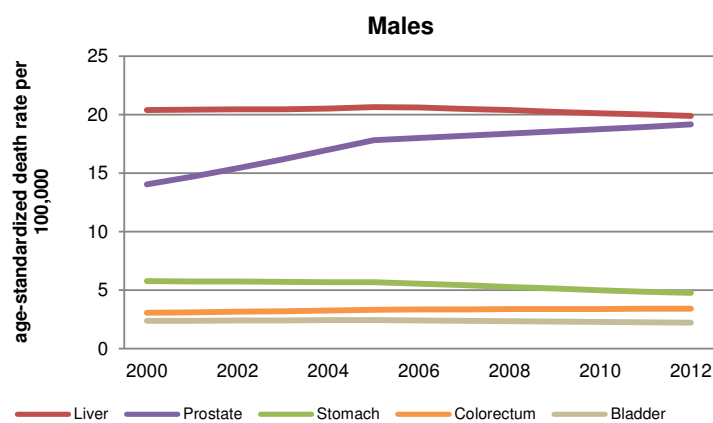
Total population: 494,000
Income group: Lower middle

Total deaths: 2,600
Life expectancy at birth: Total:74 Males:71 Females:78

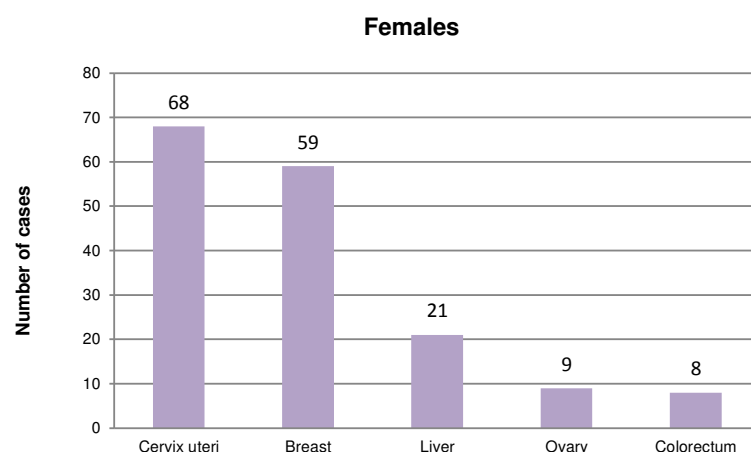
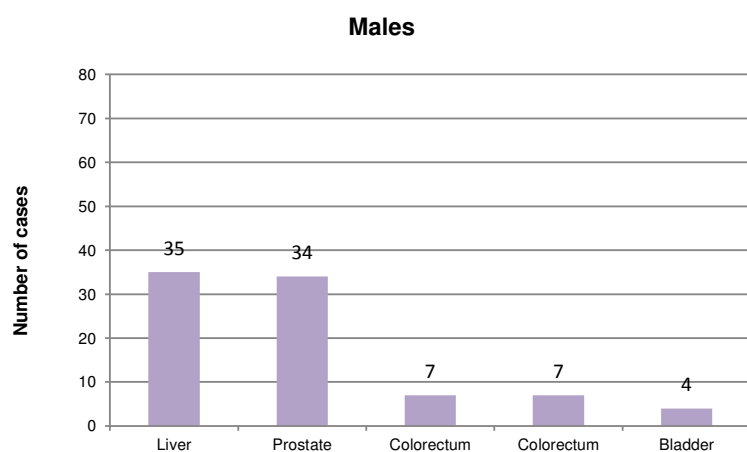
Cancer Mortality Profile*



Age-Standardized Cancer Mortality Trends*



Cancer Incidence**



Adult Risk Factors

	Males	Females	Total
Current tobacco smoking (2011)	13.5%	3.4%	8.4%
Total alcohol per capita consumption, in litres of pure alcohol (2010)	11.2	2.7	6.9
Physical inactivity (2010)	11.7%	25.0%	18.5%
Obesity (2014)	7.7%	15.7%	11.7%
Household solid fuel use (2012)	-	-	31.0%

Cancer Plans, Monitoring and Surveillance

Has an operational cancer policy/strategy/action plan	ND
Has a cancer registry	ND
Scope	ND
Coverage	ND
Last year of data	ND

Cancer Primary Prevention Policies

Tobacco control

Has an operational policy, strategy or action plan to reduce the burden of tobacco use	ND
Smoke-free legislation	Up to two public places completely smoke-free
Tobacco dependence treatment	NRT and/or some cessation services (at least one of which is cost-covered)
Warning labels	No warnings or small warnings
Bans on advertising, promotion and sponsorship	Complete absence of ban, or ban that does not cover national television, radio and print media
Tobacco taxes	26–50% of retail price is tax

Overweight and obesity prevention and control

Has an operational policy, strategy or action plan for reducing overweight/obesity	ND
--	----

Physical inactivity prevention and control

Has an operational policy, strategy or action plan to reduce physical inactivity and/or promote physical activity	ND
---	----

Harmful use of alcohol prevention and control

Has an operational policy, strategy or action plan to reduce the harmful use of alcohol	ND
---	----

National immunization

Human Papillomavirus vaccination schedule	...
Hepatitis B vaccination schedule	Birth
Hepatitis B vaccination coverage, infants	93%

Cancer Screening and Early Detection

Cervical cancer

Cervical cytology (PAP)	ND
Acetic acid visualization (VIA)	ND

Breast cancer

Breast palpation / clinical breast exam (CBE)	ND
Mammogram	ND

Colorectal cancer

Faecal occult blood test or faecal immunological test	ND
Bowel cancer screening by exam or colonoscopy	ND

Cancer Treatment and Palliative Care

Radiotherapy	ND
Total high energy teletherapy units / million inhabitants	0.0
Number of radiotherapy centres	...
Number of radiation oncologists	...
Chemotherapy (medicines not specified)	ND
Oral morphine (formulation not specified)	ND
Non-methadone morphine equivalent consumption per cancer death (mg)	...
Community/home care for people with advanced stage cancer and other NCDs	ND

* No mortality data available. Figures are based on national incidence estimates and modelled survival.

** No incidence data available. Figures are based on national incidence estimates from neighbouring countries.

... = No data available

ND = Country did not respond to country capacity survey